

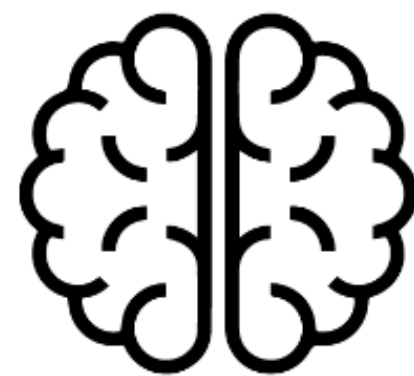
A dedicated portfolio of services for your CNS biomarker research

## THERAPEUTIC FOCUS

- Alzheimer's disease
- Parkinson's disease
- Multiple Sclerosis
- Dementia
- Neuroinflammation
- Depression

## CLINICAL STRENGTHS

- Alzheimer Research Center
- Multiple Sclerosis Center
- Neuroimaging Center
- Biomarker Development Center
- Key clinical experts in Neurology
- Phase I CSF sampling solutions
- Experience in clinical validation of neurological biomarkers
- Imaging capabilities (PET, CT, SPECT, 3T-MRI, EEG, NIRS and TMS)



## SAMPLE COLLECTIONS

- Patient cohort studies in Alzheimer's, Parkinson's, Dementia, Delirium
- Possibility of de-novo sampling in patients
- Biomarker discovery and validation in general population biobank (165.000 subjects)
- Sampling in cells, tissues, CSF, blood, plasma, urine

## BIOANALYTICAL SOLUTIONS

- **Neurology Assays specialties**
  - **Abeta 38,40,42, Total 42, Total Tau in CSF**
  - **Abeta 40 and Total Abeta 42 in plasma**
  - **Biogenic amines, precursors & metabolites**
  - **Kynurenines**
  - **Ceramides**
  - **Sphingosines**
  - **Tryptophan pathway metabolites**
  - **Inflammatory markers**
- Targeted LC-MS/MS analysis
- Metabolic profiling
- Validated assays available in CSF, microdialysates, brain tissue, plasma, serum, urine

## PRECLINICAL CAPABILITIES

- Preclinical testing in animal models for depression, Parkinson's, Huntington's
- Brain microdialysis in diverse animal models
- MicroPET, microSPECT and microCT imaging for small animals